

Haarish

Haarish Equipments Private Limited

EQUIPMENTS | PROJECTS | SERVICES

- Flour Mill ■ Atta Mill ■ Daliya Mill ■ Rice Mill ■ Pulses (Dall) Mill ■ Besan Mill
- Cleaning, Grading, Sorting ■ Maize Mill ■ Rice Grit ■ Feed And Aqua Mill ■ Ethanol Plant



“About Us”



Haarish Equipments Private Limited, founded in 2007 by four brothers, has been focused on the manufacturing of material handling equipment and fabrication works for flour mills, Atta (Chakki) mills, Daliya mills, rice mills, pulses (Dall) mills, besan mills, cleaning, grading, sorting, maize mills, rice grit, feed and aqua plants, ethanol plants, etc. .

Haarish With more than 5 lacs of square feet of area in manufacturing facilities and offices, it is equipped with modern equipment with the highest engineering and manufacturing technology available. Our aim is to offer high-quality and best service in domestic and international sales with the Haarish brand by combining it with the experiences we have gained over the years.

All materials and equipment used in the production of handling equipment and fabrication works are ISO 9001:2015 certified and meet all requirements of the quality management system. Its facilities equipped with the most advanced technology.

HAARISH It has proven its privilege with its specialized quality control unit. The engineering team, which performs production and quality control with the latest technology, using modern machinery and equipment at every stage of production, constantly analyzes customer requirements. The experienced engineering team in the R&D department prepares project designs, developments, templates, drawings, and production systems using the latest computer programs and techniques.

HAARISH It constantly continues its search for quality in order to meet customer needs and offer the best-quality products. The basic components of our quality in production are the needs of the customer along with advanced technology. Our human resources, which realize our quality, are one of the main issues we constantly invest in.

The most important part of Haarish's main purpose is to carry its success in the sector forward day by day and to constantly provide the highest quality production and service to its customers.



The features that make us market leaders

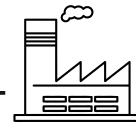
Our Experience
(Since 2007)



In-house state-of-art
Manufacturing Facilities



Total Area More Than
5 Lacs Sq. Feet.



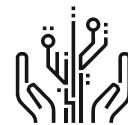
Quality Control



ISO Certified



Technology
Innovation



Global Export



Clients
Satisfaction



After Sales Services &
Technical Support



Environment, Health and Safety :

- In Haarish every process and activity is formed with specific attention to conserve Environment, which is prime duty of every employee in Haarish.
- Our Human Resource Department is active to continuously maintain safety and health norms in the company.
- Whole Haarish team work as a HAARISH Family in a cordial atmosphere in the workplace.

“Manufacturing Facility”

Our Facilities Includes

- ⚙ CNC Fiber Laser Cutting
- ⚙ CNC Horizontal Milling
- ⚙ Automatic Welding Process
- ⚙ Powder Coating System
- ⚙ CNC Press Brake
- ⚙ CNC Vertical Milling
- ⚙ MIG & TIG Welding Facility
- ⚙ Air Compressors
- ⚙ CNC Turret Punching
- ⚙ CNC Sheet Rolling
- ⚙ CNC Tube Laser
- ⚙ EOT Crans



Bucket Elevator



Chain Conveyor



Screw Conveyor



Belt Conveyor



Z - Bucket Elevator



Tubular Screw Conveyor



Chain Conveyor with Intake



Pneumatic Slide Gate



Manual Slide Gate



Pneumatic Cyclone



Bin Discharger



Hammer Mill



Aspiration Fan



Cyclone



Airlock



Bag Filter



Aspiration Ducting



Straight Pipe



Bend 90°



Bend 60°



Bend 45°



Bend 30°



Cone



Cleaning Door



Branch Pipe



Butterfly Valves



False Air Inlet



Aspiration Hopper



Transition Hopper



Rain Hood



Rain Hood Covering

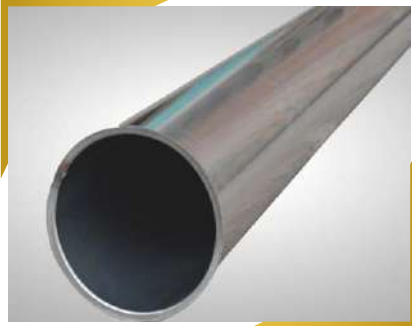


Support Clamp



Tension Ring

SS Spouting



Straight Pipe



Segment



Universal Bend



Branch Pipe



Branch Pipe Symmetric



Sight Glass



Inspection Spout Hinged Cover



Inspection Spout Rubber Cover



Diverter Symmetric



Branch Pipe Symmetric



Pneumatic Diverter



Manual Diverter



Cone



Flaring



Tension Ring with bolt



Flash Air Inlet

MS Spouting



Straight Pipe



Segment



Universal Bend



Branch Pipe



Inspection Spout



Sight Glass



False air Inlet



Cone with Flared



Pipe Bend



Branch Pipe



Falling Brake



Branch Pipe Symmetric



T Spout



Dead Box



Sleeve

Bin, Hopper & Accessories



Product Hopper



Multiple Bin Outlet Hopper



Double Bagging Station



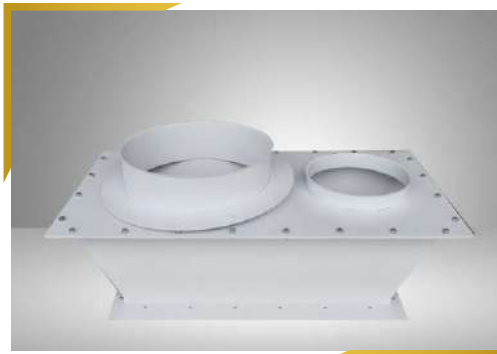
Connection Hopper Square -Round



Manhole Cover



Single Bagging Cone



Filter Double Inlet Hopper



Flour Admix Hopper



Support



Bin Hopper

Storage Silo



Storage Bin



Atta Chakki



Emery Roll



Dall Chakki



Dall Fatka



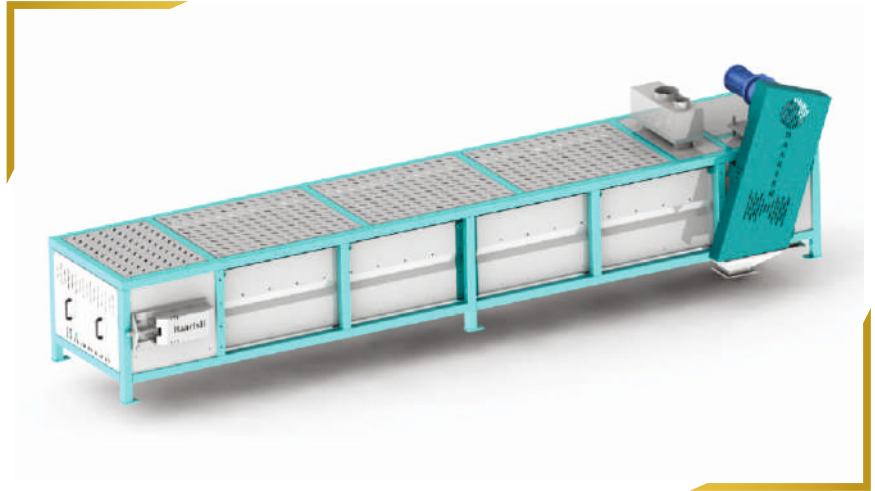
Round Screener



Pulveriser



Dall Cooler



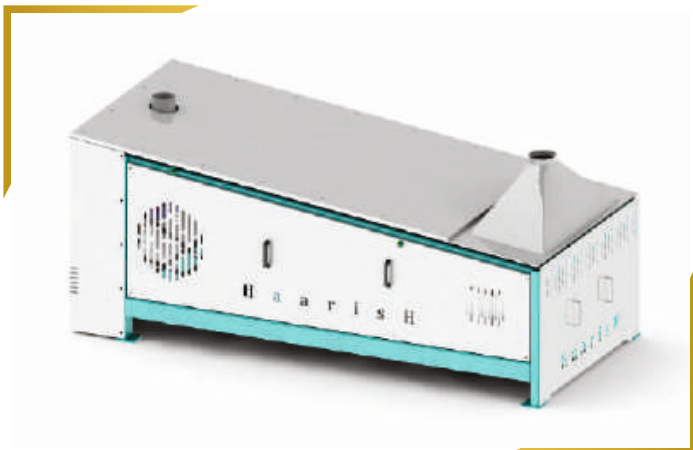
Dall Polisher



Magnetic Destoner



Khatkhatiya



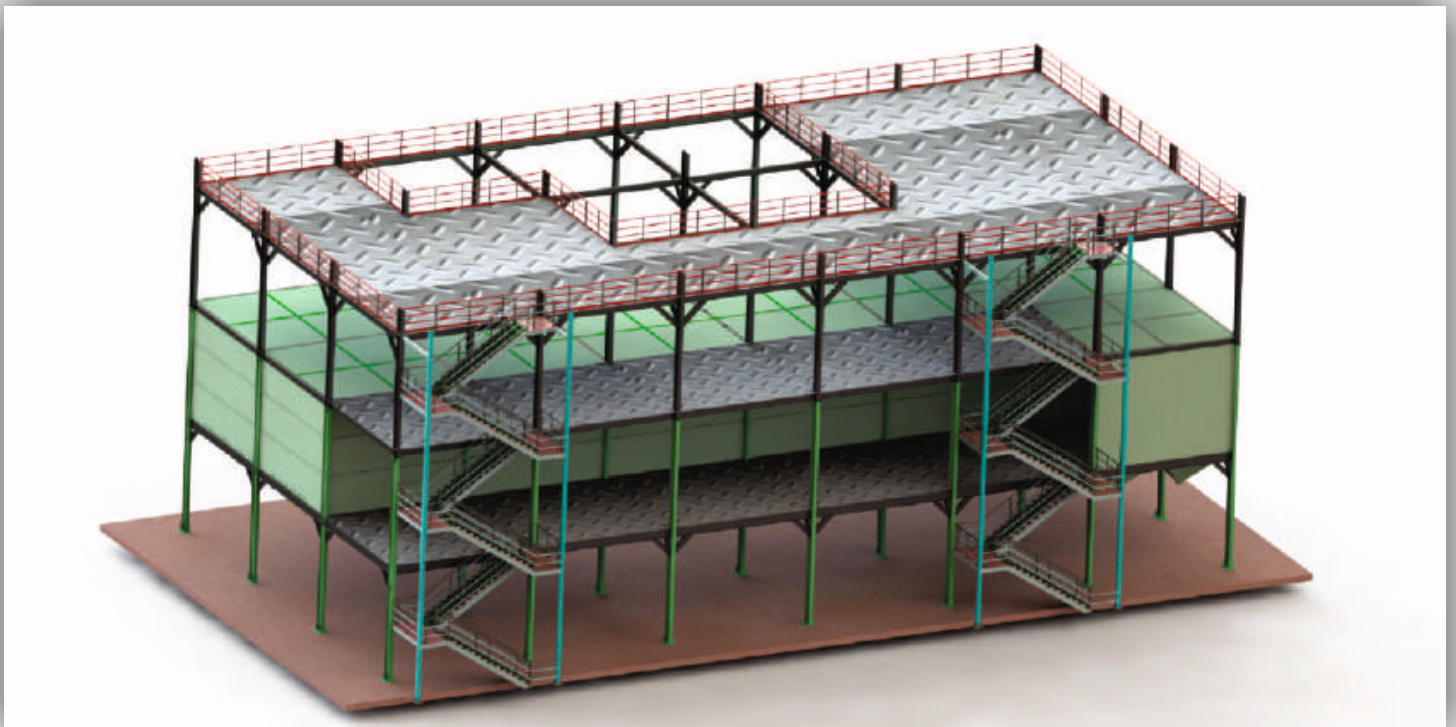
Truck Loader



“ Steel Structure ”

Haarish structural steel products are custom-designed and workshop fabricated, welded steel structures for applications such as Foods - Flour Mill, Atta Mill, Daliya Mill, Rice Mill, Pulses (Dall) Mill, Besan Mill Cleaning, Grading, Sorting, Maize Mill, Rice Grit, Feed And Aqua Mill, Ethanol Plant etc. We are one of the most innovative steel structure fabricators and are always looking to enhance our range of products and services, including project execution.

Structural steel has traditionally been fabricated on-site, mainly due to lack of infrastructure for transporting heavy sections from an off-site workshop to a project site. Moreover, there is often insufficient space at a site to set up a fabrication workshop and skilled labor is available at a premium. These issues can always be mitigated by workshop-made steel structures which are proving to be more efficient in terms of quality and timelines. This helps to reduce the time and cost of execution, and is expected to fuel the demand for steel structures in future. Faster construction will propel the industry towards factory-made steel structures, owners and consultants will realize the advantages in terms of uniformity of finish and better quality, as steel producers align their rolling sections as per the design needs.



“ Installation & Services ”

Flour Mill



Atta Mill (Chakki)



Rice Mill



Pulses (Dall) Mill



Besan Mill



Corn (Maize) Mill



Feed & Aqua Mill



Ethanol Plant



HaarishH

“Some of our Major Clients”



Haarish Equipments Private Limited

- 📍 260/1, Village-Bijepur, Near Industrial Area, Betma, Indore, Madhya Pradesh– 453001 (INDIA)
- ☎ +91 9109130460, +91 8962005814/05.
- ✉ info@haarish.com
- 🌐 www.haarish.com

